

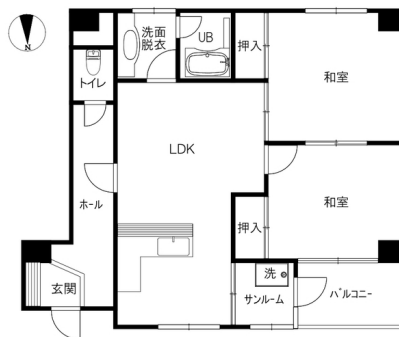


写真準備中

## Monthly rent

Rent	—	Security deposit	—
Common fees	—	Key money	—
Management fees	—	Restoration fee	—
Parking fee	—	Brokerage fee	—
Fixed water fee	—	Key setting fee	—
Town fee	—	Internet	—
Mamex membership fee	2,970円	Mamex Admission fee	13,200円
Other	—	Other	—

## Initial costs



**Room layout** 和7.6 和8.5 LDK14.9（専有面積：75.65㎡）

## Property description

Location	金沢市尾張町1丁目10番12号		
Transport	北鉄バス 尾張町バス停/徒歩1分		
Property type	マンション	Number of Rooms	12室
Structure	鉄骨鉄筋コンクリート造地上7階建		
Date of completion	1988年12月		
Fire insurance	Included in Mamex Members Club		
Guarantor company	Included in Mamex Members Club		
Property category	Managed properties		
Type of transaction	Agency		

## Rental condition

Students only	Women only	Foreigner friendly	Children Allowed
2 people allowed	Pets allowed	Available for spring move-in	Reservations available before acceptance

## Facilities

Free internet		Wi-Fi routers	
Separated bath and toilet	Air conditioning	BS compatible	CATV compatible
Balcony	Sunrooms	Bathroom dryer	Indoors washer
Independent washbasin	Smart toilet	Gas kitchen	City gas
Auto-lock	Card key	CCTV	TV Intercom
Delivery box	Lighting equipment	Roofed bicycle park	Roofed car park

## Other facilities

Carry-on stove	Lift
----------------	------

Morinosato Branch Global Sales Department

金沢市もりの里2丁目21番地 0120-36-3335

免許番号 石川県知事(6)第3529号

手数料負担:貸主0% 借主100% 手数料配分:元付50% 客付50%



On-site Gomiste—Xiang/ShoesBox/Corner Room