

グランドール泉本町 0101

during move-in



Property detail



写真準備中

Monthly rent

Rent	—
Common fees Management fees	—
Parking fee	—
Fixed water fee	—
Town fee	—
Mamex membership fee	3,300円
Other	—

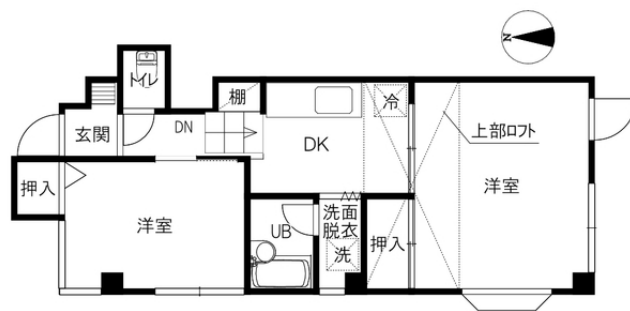
Initial costs

Security deposit	—
Key money	—
Restoration fee	—
Brokerage fee	—
Key setting fee	—
Internet	—
Mamex Admission fee	24,200円
Other	—

Property description

Location	金沢市泉本町4丁目114番地		
Transport	北鉄バス 泉一丁目バス停/徒歩6分		
Property type	マンション	Number of Rooms	14室
Structure	鉄骨造地上4階建		
Date of completion	1990年2月		
Fire insurance	Included in Mamex Members Club		
Guarantor company	Included in Mamex Members Club		
Property category	Managed properties		
Type of transaction	Agency		

On-site garbage station/More than 2 stove tops/Sh... —



Room layout 洋8.5 洋5.4 K3.8 (専有面積: 40.7㎡)

Rental condition

Students only	Women only	Foreigner friendly	Children Allowed
2 people allowed	Pets allowed		

Facilities

Free internet	Wi-Fi routers		
Separated bath and toilet	Air conditioning	BS compatible	CATV compatible
Balcony	Sunrooms	Bathroom dryer	Indoors washer
Washbasin In bathroom	Smart toilet	Gas kitchen	Propane gas
Auto-lock	Card key	CCTV	TV Intercom
Delivery box	Lighting equipment	Roofed bicycle park	Car park

Other facilities

Carry-on stove

Morinosato Branch Global Sales
Department金沢市もりの里2丁目21番地 0120-36-3335
免許番号 石川県知事(6)第3529号
手数料負担: 貸主0% 借主100% 手数料配分: 元付50% 客付50%


 のうか不動産
 NOKA REAL ESTATE