



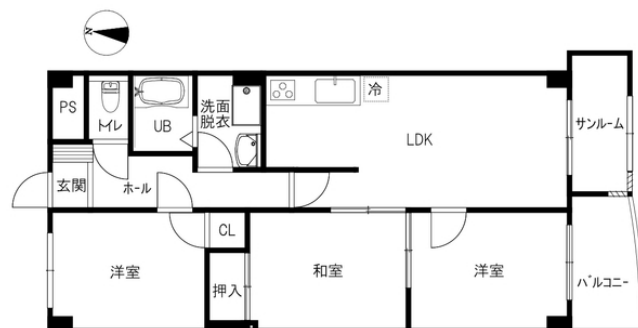
Monthly rent

Rent	—	Security deposit	—
Common fees	—	Key money	—
Management fees	—		—
Parking fee	—	Restoration fee	—
Fixed water fee	—	Brokerage fee	—
Town fee	—	Key setting fee	—
Mamex membership fee	2,970円	Internet	—
Other	—	Mamex Admission fee	13,200円
		Other	—

Property description

Location	金沢市もりの里1丁目143番地		
Transport	北鉄バス 若松バス停/徒歩1分		
Property type	マンション	Number of Rooms	34室
Structure	鉄骨造地上6階建		
Date of completion	1994年3月		
Fire insurance	Included in Mamex Members Club		
Guarantor company	Included in Mamex Members Club		
Property category	Managed properties		
Type of transaction	Agency		

On-site garbage station/More than 2 burners on stove top/Shu-zbox/Corner room/2 air conditioners



Room layout

和6 和6 洋6.1 LDK12.2 (専有面積: 69.4㎡)

Rental condition

Students only	Women only	Foreigner friendly	Children Allowed
2 people allowed	Pets allowed		

Facilities

Free internet		Wi-Fi routers	
Separated bath and toilet	Air conditioning	BS compatible	CATV compatible
Balcony	Sunrooms	Bathroom dryer	Indoors washer
Washbasin	Smart toilet	IH kitchen	Propane gas
Auto-lock	Card key	CCTV	TV Intercom
Delivery box	Lighting equipment	Roofed bicycle park	Car park

Other facilities

INDUCTION HOB	Lift	Trunk room
---------------	------	------------

Morinosato Branch Global Sales Department

金沢市もりの里2丁目21番地 0120-36-3335

免許番号 石川県知事(6)第3529号

手数料負担: 貸主0% 借主100% 手数料配分: 元付50% 客付50%

