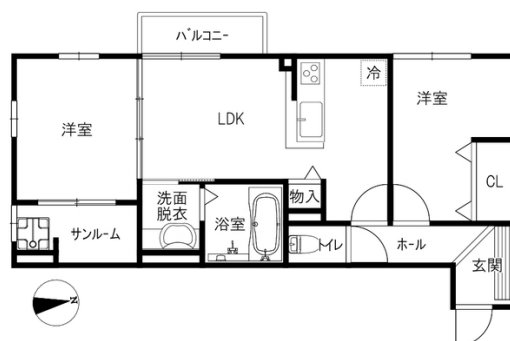




Monthly rent

Rent	69,000円	Security deposit	69,000円
Common fees		Key money	138,000円
Management fees	3,000円	Restoration fee	69,000円
Parking fee	3,300円／1台	Brokerage fee	家賃＋駐車料の1か月（税別）
Fixed water fee	実費	Key setting fee	19,800円
Town fee	200円	Internet	11,000円
Mamex membership fee	2,970円	Mamex Admission fee	13,200円
Other	—	Other	—

Initial costs



Room layout

洋5.1 洋5.3 LDK9.8（専有面積：51.57㎡）

Rental condition

Students only	Women only	Foreigner friendly	Children Allowed
2 people allowed	Pets allowed		

Property description

Location	金沢市田上本町2丁目124番地1		
Transport	北鉄バス 田上本町バス停/徒歩4分		
Property type	アパート	Number of Rooms	8室
Structure	軽量鉄骨造地上2階建		
Date of completion	2020年3月		
Fire insurance	Included in Mamex Members Club		
Guarantor company	Included in Mamex Members Club		
Property category	Managed properties		
Type of transaction	Agency		

Facilities

Free internet		Wi-Fi — included	
Separated bath and toilet	Air conditioning	BS/CS support	CATV compatible
Balcony	Sunrooms	Bathroom dryer	Indoors washer
Washbasin	Smart toilet	IH kitchen	All-electric
Auto-lock	IC KEY	CCTV	TV Intercom
Delivery box	Lighting equipment	Roofed bicycle park	Car park

Other facilities

INDUCTION HOB	Trunk room	Reheating function
---------------	------------	--------------------

Morinosato Branch Global Sales Department

金沢市もりの里2丁目21番地 0120-36-3335

免許番号 石川県知事(6)第3529号

手数料負担:貸主0% 借主100% 手数料配分:元付50% 客付50%



MORE THAN 2 BURNERS ON THE STOVE / SYSTEM KITCHEN / FACE TO FACE KITCHEN / ECO-CUC —/ INTER —NET OPTICAL FIBER / ROOMSDRYING INSIDE / SHU —ZUBOX / STORAGE UNDER THE FLOOR / CORNER ROOM / NO WATER PURIFIER / DRYING FAN / 1TSUBO BATH / SECOND PARKING SPACE AVAILABLE / OFF-SITE PARKING LOT AVAILABLE