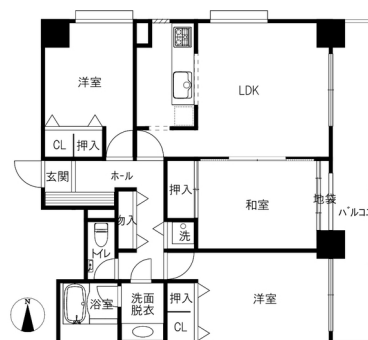


Monthly rent

Rent	72,000円	Security deposit	—
Common fees	3,000円	Key money	—
Management fees			
Parking fee	空き区画なし	Restoration fee	80,000円
Fixed water fee	実費	Brokerage fee	家賃＋駐車料の1か月（税別）
Town fee	—	Key setting fee	—
Mamex membership fee	3,300円	Internet	—
Other	—	Mamex Admission fee	24,200円
		Other	—

Initial costs



Room layout

洋7.3 洋5.7 和6 LDK10.1（専有面積：79.2㎡）

Rental condition

Students only	Women only	Foreigner friendly	Children Allowed
2 people allowed	Pets allowed	Available for spring move-in	Reservations available before acceptance

Property description

Location	小松市大川町3丁目102番地2		
Transport	JR北陸新幹線 小松駅/徒歩19分		
Property type	マンション	Number of Rooms	85室
Structure	鉄骨鉄筋コンクリート造地上10階建		
Date of completion	1993年1月		
Fire insurance	Included in Mamex Members Club		
Guarantor company	Included in Mamex Members Club		
Property category	Managed properties		
Type of transaction	Agency		

Facilities

Free internet		Bring-your-own Wi-Fi router	
Separated bath and toilet	Air conditioning	BS compatible	CATV compatible
Balcony	Sunrooms	Bathroom dryer	Indoors washer
Washbasin	Smart toilet	Gas kitchen	City gas
Auto-lock	Card key	CCTV	TV Intercom
Delivery box	Lighting equipment	Roofed bicycle park	Car park

Other facilities

Gas stove	Lift	Reheating function
-----------	------	--------------------

Motorcycle parking space/Garbage — on site/More than 2 stoves/System kitchen/Facing — box/Corner room/One air conditioner in the living room. 5.7 square meters of Rooms cannot be installed. / — condominium type compatible (Hikari Next). Individual contracts required / Pets other than small birds and fish are not allowed / Water charges will be billed by the management association / Confirmation of available parking spaces with the management association required / Monthly parking available nearby (400m) (Reizvoll —).

Morinosato Branch Global Sales Department

金沢市もりの里2丁目21番地 0120-36-3335

免許番号 石川県知事(6)第3529号

手数料負担: 貸主0% 借主100% 手数料配分: 元付50% 客付50%

