

KOWLOON 0201

during move-in



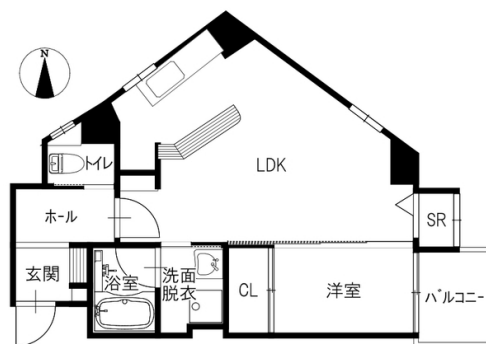
Property detail



Monthly rent

Rent	—	Security deposit	—
Common fees	—	Key money	—
Management fees	—	Restoration fee	—
Parking fee	—	Brokerage fee	—
Fixed water fee	—	Key setting fee	—
Town fee	—	Internet	—
Mamex membership fee	2,970円	Mamex Admission fee	13,200円
Other	—	Other	—

Initial costs



Room layout

洋3.3 LDK12.4 (専有面積: 40.06㎡)

Rental condition

Students only	Women only	Foreigner friendly	Children Allowed
Single Apartment	Pets allowed		

Property description

Location	金沢市桜町21番20号		
Transport	北鉄バス 桜町バス停/徒歩2分		
Property type	マンション	Number of Rooms	17室
Structure	鉄骨造地上7階建		
Date of completion	2009年2月		
Fire insurance	Included in Mamex Members Club		
Guarantor company	Included in Mamex Members Club		
Property category	Managed properties		
Type of transaction	Agency		

Facilities

Free internet		Wi-Fi — included	
Separated bath and toilet	Air conditioning & heating	BS compatible	CATV compatible
Balcony	Sunrooms	Bathroom dryer	Indoors washer
Washbasin	Smart toilet	Gas & IH kitchen	Propane gas
Auto-lock	Card key	CCTV	TV Intercom
Delivery box	Lighting equipment	Roofed bicycle park	Car park

Other facilities

INDUCTION HOB	Lift
---------------	------

Morinosato Branch Global Sales Department

金沢市もりの里2丁目21番地 0120-36-3335

免許番号 石川県知事(6)第3529号

手数料負担: 貸主0% 借主100% 手数料配分: 元付50% 客付50%



のうか不動産
NOKA REAL ESTATE

On-site garbage station/More than 2 stove tops/Internet Fibre-optic/ShoesBox/Corner room