



Monthly rent

Rent	29,000円
Common fees Management fees	2,000円
Parking fee	—
Fixed water fee	3,300円
Town fee	600円
Mamex membership fee	2,970円
Other	—

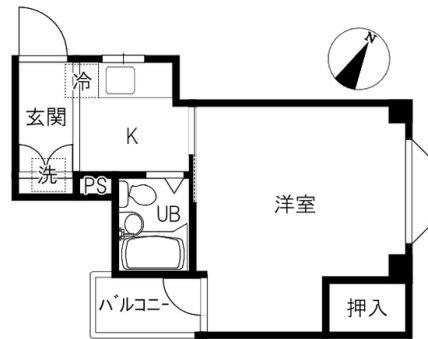
Initial costs

Security deposit	—
Key money	—
Restoration fee	40,000円
Brokerage fee	家賃+駐車料の 1か月 (税別)
Key setting fee	16,500円
Internet	11,000円
Mamex Admission fee	13,200円
Other	—

Property description

Location	金沢市笠舞2丁目22番6号		
Transport	北鉄バス 笠舞二丁目バス停/徒歩4分		
Property type	マンション	Number of Rooms	12室
Structure	鉄骨造地上3階建		
Date of completion	1990年3月		
Fire insurance	Included in Mamex Members Club		
Guarantor company	Included in Mamex Members Club		
Property category	Managed properties		
Type of transaction	Agency		

More than 2 stove tops / Internet Fibre-optic / Roomsinside drying / corner room / FURNISHED ROOM(TV/WASHING MACHINE/REFRIGERATOR/MICROWAVE/BED/TV STAND/RO —TE —BULL/RACK BS NON-COMPATIBLE)



Room layout 洋6.8 K (専有面積：20.1㎡)

Rental condition

Students only	Women only	Foreigner friendly	Children Allowed
Single Apartment	Pets allowed	Available for spring move-in	Reservations available before acceptance

Facilities

Free internet		Bring-your-own Wi-Fi router	
Unit bath	Air conditioning	BS compatible	CATV compatible
Balcony	Sunrooms	Bathroom dryer	Indoors washer
Washbasin In bathroom	Smart toilet	Kitchen	Propane gas
Auto-lock	Card key	CCTV	TV Intercom
Delivery box	Lighting equipment	Roofed bicycle park	Car park

Other facilities

INDUCTION HOB

Morinosato Branch Global Sales
Department

金沢市もりの里2丁目21番地 0120-36-3335
免許番号 石川県知事(6)第3529号
手数料負担:貸主0% 借主100% 手数料配分:元付50% 客付50%

