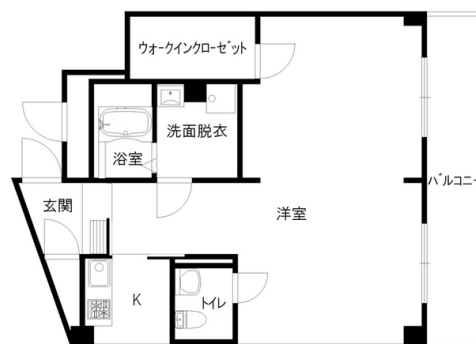




Monthly rent

Rent	—	Security deposit	—
Common fees	—	Key money	—
Management fees	—	Restoration fee	—
Parking fee	—	Brokerage fee	—
Fixed water fee	—	Key setting fee	—
Town fee	—	Internet	—
Mamex membership fee	3,300円	Mamex Admission fee	24,200円
Other	—	Other	—

Initial costs



Room layout 洋21 K (専有面積：55.88㎡)

Rental condition

Students only	Women only	Foreigner friendly	Children Allowed
2 people allowed	Pets allowed	Available for spring move-in	Reservations available before acceptance

Property description

Location	金沢市菊川2丁目25番1号		
Transport	北鉄バス 思案橋バス停/徒歩1分		
Property type	マンション	Number of Rooms	20室
Structure	鉄筋コンクリート造地上4階建		
Date of completion	1989年4月		
Fire insurance	Included in Mamex Members Club		
Guarantor company	Included in Mamex Members Club		
Property category	Managed properties		
Type of transaction	Agency		

Facilities

Free internet		Wi-Fi — included	
Separated bath and toilet	Air conditioning	BS compatible	CATV compatible
Balcony	Sunrooms	Bathroom dryer	Indoors washer
Washbasin	Smart toilet	Gas kitchen	Propane gas
Auto-lock	Numeric keypad	CCTV	TV Intercom
Delivery box	Lighting equipment	Roofed bicycle park	Roofed car park

Other facilities

Gas stove	Lift
-----------	------

MORE THAN 2 BURNERS ON THE STOVE / Internet Fibre-optic / Walk-in Closet / ShoesBox / 1 MONTH RENT DEPOSIT FOR PETS / UP TO 1 SMALL DOG OR CAT / 1 P WITH ROOF 11,000 YEN (INCLUDING TAX) 2 P IN A ROW 13,200 YEN (INCLUDING TAX) / 2 AC UNITS INSTALLED / WATER FEE 5,000 YEN + TAX FOR 2 PEOPLE MOVING IN / IN THE PREMISES ROOMS NO SMOKING ON THE PREMISES

Morinosato Branch Global Sales Department

金沢市もりの里2丁目21番地 0120-36-3335

免許番号 石川県知事(6)第3529号

手数料負担: 貸主0% 借主100% 手数料配分: 元付50% 客付50%

