

## ベルビュー II 0205

2025/ 3/ 28~Move-in ready



Property detail

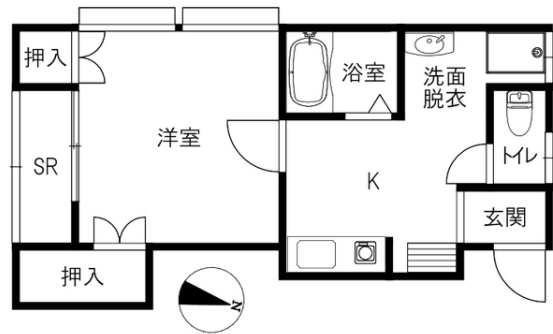


## Monthly rent

Rent	40,000円
Common fees Management fees	2,000円
Parking fee	—
Fixed water fee	実費
Town fee	200円
Mamex membership fee	2,970円
Other	—

## Initial costs

Security deposit	—
Key money	—
Restoration fee	50,000円
Brokerage fee	家賃+駐車料の1か月(税別)
Key setting fee	16,500円
Internet	—
Mamex Admission fee	13,200円
Other	—



## Room layout 洋6.4 K (専有面積: 30.46㎡)

## Property description

Location	金沢市もりの里3丁目68番地		
Transport	北鉄バス 鈴見台二丁目バス停/徒歩1分		
Property type	アパート	Number of Rooms	8室
Structure	木造地上2階建		
Date of completion	1994年2月		
Fire insurance	Included in Mamex Members Club		
Guarantor company	Included in Mamex Members Club		
Property category	Managed properties		
Type of transaction	Agency		

Internet Fibre-optic/Shoebox/corner room/top floor

## Rental condition

Students only	Male / Female	Foreigner friendly	Children Allowed
Single Apartment	Pets allowed	Available for spring move-in	Reservations available before acceptance

## Facilities

Free internet		Bring-your-own Wi-Fi router	
Separated bath and toilet	Air conditioning	BS compatible	CATV compatible
Balcony	Sunrooms	Bathroom dryer	Indoors washer
Washbasin	Smart toilet	IH kitchen	Propane gas
Auto-lock	Card key	CCTV	TV Intercom
Delivery box	Lighting equipment	Roofed bicycle park	Car park

## Other facilities

INDUCTION HOB

Morinosato Branch Global Sales Department

金沢市もりの里2丁目21番地 0120-36-3335  
 免許番号 石川県知事(6)第3529号  
 手数料負担: 貸主0% 借主100% 手数料配分: 元付50% 客付50%

