

## 保健学類前平屋 0001

Closed



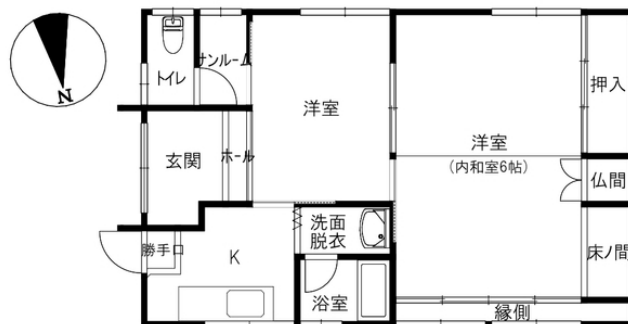
Property detail



## Monthly rent

Rent	—	Security deposit	—
Common fees	—	Key money	—
Management fees	—	Restoration fee	—
Parking fee	—	Brokerage fee	—
Fixed water fee	—	Key setting fee	—
Town fee	—	Internet	—
Mamex membership fee	3,300円	Mamex Admission fee	24,200円
Other	—	Other	—

## Initial costs



Room layout 洋6 洋12 K3.7 (専有面積: 54.87㎡)

## Property description

Location	金沢市小立野5丁目10番40号		
Transport	北鉄バス 石引広見バス停/徒歩9分		
Property type	貸家	Number of Rooms	1室
Structure	木造地上1階建		
Date of completion	1901年1月		
Fire insurance	Included in Mamex Members Club		
Guarantor company	Included in Mamex Members Club		
Property category	Managed properties		
Type of transaction	Agency		

More than 2 burners on the stove / System kitchen / Private garden / Date of construction unknown / 2 air conditioners (1 for each Rooms) / 6 tatami mats for 12 Rooms / Actual town expenses / 800 yen per month, paid in advance to the group leader for 1 year / Weeds on the premises shall be handled by the tenant / Be careful not to disturb the neighbors with noise, etc. Pets allowed: Up to 1 dog or cat. Dogs up to medium size: 2 months rent plus security deposit if you keep the dog.

## Rental condition

Students only	Women only	Foreigner friendly	Children Allowed
2 people allowed	Pets allowed	Available for spring move-in	Reservations available before acceptance

## Facilities

Free internet		Wi-Fi routers	
Separated bath and toilet	Air conditioning	BS compatible	CATV compatible
Balcony	Sunrooms	Bathroom dryer	Indoors washer
Washbasin	Smart toilet	Gas kitchen	City gas
Auto-lock	Card key	CCTV	TV Intercom
Delivery box	Lighting equipment	Roofed bicycle park	Car park

## Other facilities

Carry-on stove

Morinosato Branch Global Sales Department

金沢市もりの里2丁目21番地 0120-36-3335

免許番号 石川県知事(6)第3529号

手数料負担: 貸主0% 借主100% 手数料配分: 元付50% 客付50%

のうか不動産  
NOKA REAL ESTATE