

## 山王町2丁目貸家 0001

2025/ 8/ 25~Move-in ready



Property detail



## Monthly rent

|                      |         |                     |                |
|----------------------|---------|---------------------|----------------|
| Rent                 | 70,000円 | Security deposit    | —              |
| Common fees          | —       | Key money           | —              |
| Management fees      | —       |                     |                |
| Parking fee          | 無料／2台   | Restoration fee     | 100,000円       |
| Fixed water fee      | 実費      | Brokerage fee       | 家賃＋駐車料の1か月（税別） |
| Town fee             | —       | Key setting fee     | —              |
| Mamex membership fee | 2,970円  | Internet            | —              |
| Other                | —       | Mamex Admission fee | 13,200円        |

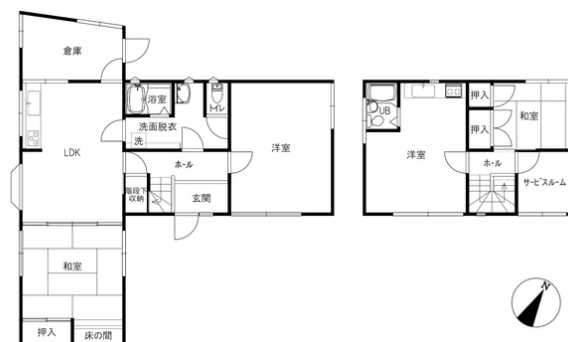
## Initial costs

Other —

## Property description

|                     |                                |                 |    |
|---------------------|--------------------------------|-----------------|----|
| Location            | 金沢市山王町2丁目164番地                 |                 |    |
| Transport           | JRバス 山王町2丁目バス停/徒歩3分            |                 |    |
| Property type       | 貸家                             | Number of Rooms | 1室 |
| Structure           | 軽量鉄骨造地上2階建                     |                 |    |
| Date of completion  | 1978年2月                        |                 |    |
| Fire insurance      | Included in Mamex Members Club |                 |    |
| Guarantor company   | Included in Mamex Members Club |                 |    |
| Property category   | Managed properties             |                 |    |
| Type of transaction | Agency                         |                 |    |

More than 2 burners / System kitchen / Private garden / No water purifier / Hot water kerosene / Actual town expenses / Free parking for 2 cars / 4 air conditioners are equipped ( First floor, First floorRooms, First floorRooms, 2nd floor LDK) / Kitchen on the 2nd floor Kitchen, 3-piece bathroom, and laundry room are also available on the 2nd floor.



## Room layout

1階 LDK12 洋11.2 和8/2階 洋10 和4.5 サービスルーム（専有面積：118.8㎡）

## Rental condition

|                  |              |                    |                  |
|------------------|--------------|--------------------|------------------|
| Students only    | Women only   | Foreigner friendly | Children Allowed |
| 2 people allowed | Pets allowed |                    |                  |

## Facilities

|                           |                    |                     |                 |
|---------------------------|--------------------|---------------------|-----------------|
| Free internet             | Wi-Fi routers      |                     |                 |
| Separated bath and toilet | Air conditioning   | BS compatible       | CATV compatible |
| Balcony                   | Sunrooms           | Bathroom dryer      | Indoors washer  |
| Washbasin                 | Smart toilet       | IH kitchen          | gas             |
| Auto-lock                 | Card key           | CCTV                | TV Intercom     |
| Delivery box              | Lighting equipment | Roofed bicycle park | Roofed car park |

## Other facilities

INDUCTION HOB

Morinosato Branch Global Sales Department

金沢市もりの里2丁目21番地 0120-36-3335

免許番号 石川県知事(6)第3529号

手数料負担:貸主0% 借主100% 手数料配分:元付50% 客付50%



のうか不動産  
NOKA REAL ESTATE